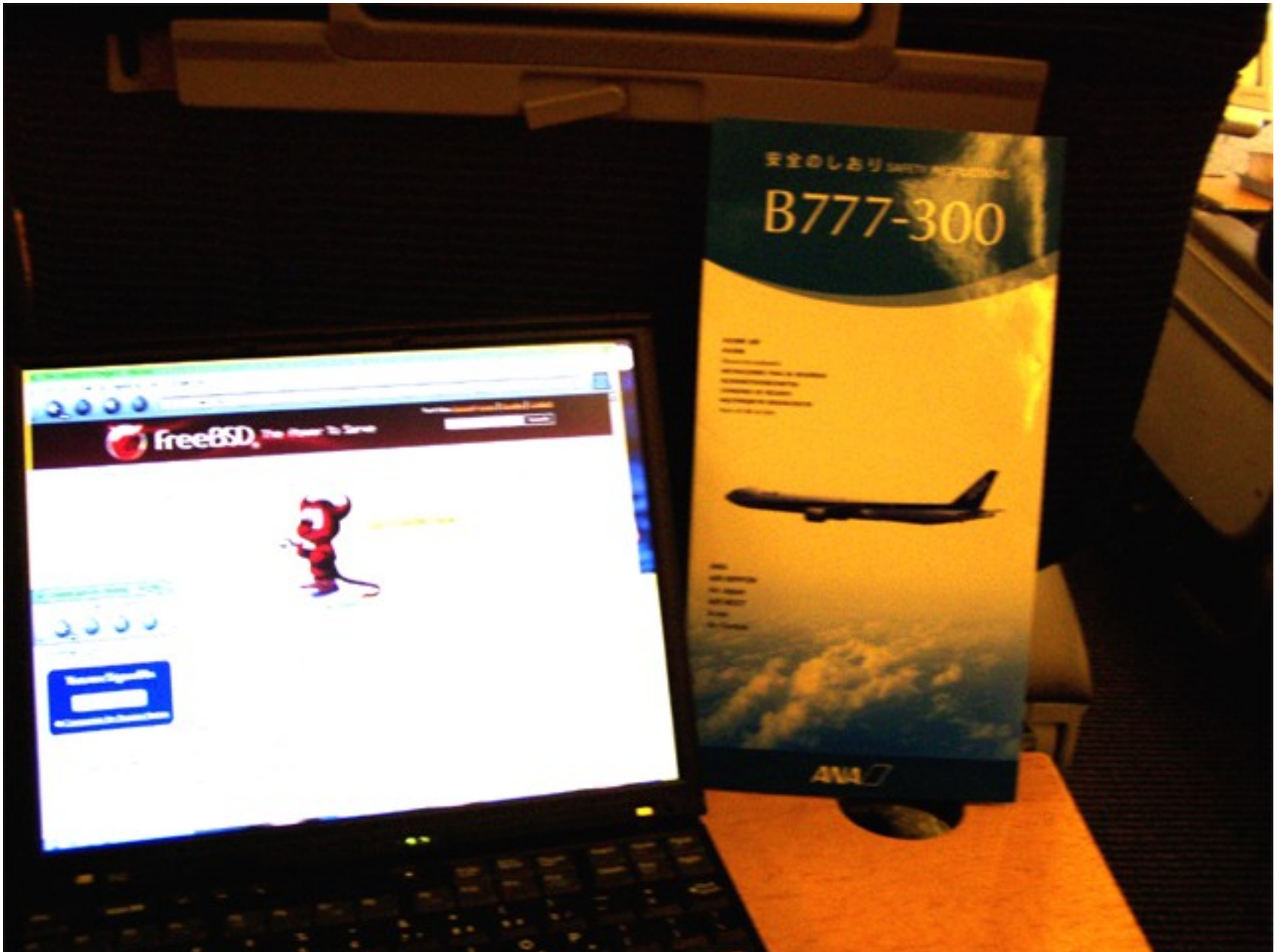


BSDで飛行機の中から
つながるぞ
(できて当たり前)
Connexion by Boeing使用記

たけおか



FreeBSD The Power To Serve

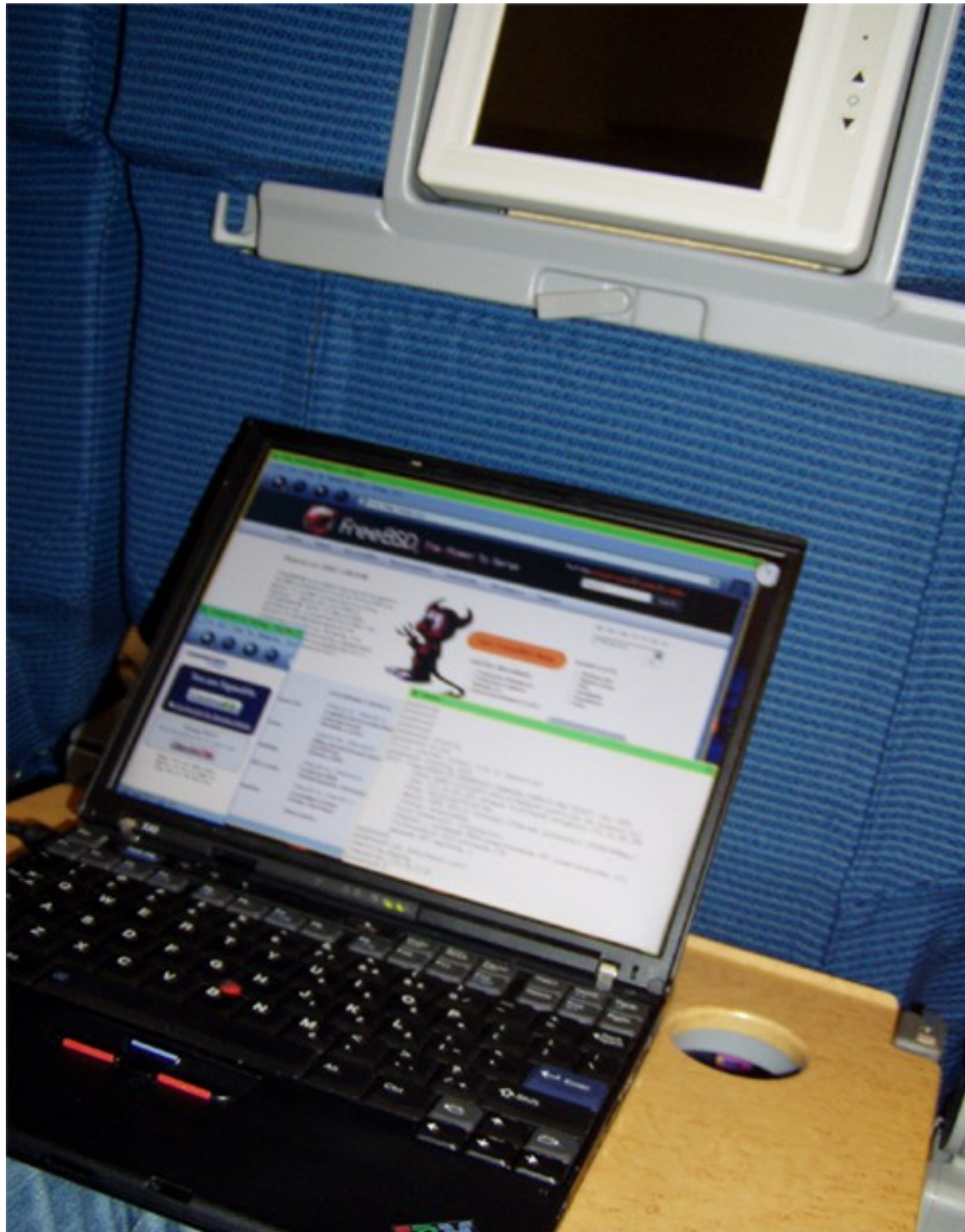


Search/Sign up

安全のしおり Safety Information
B777-300



ANA





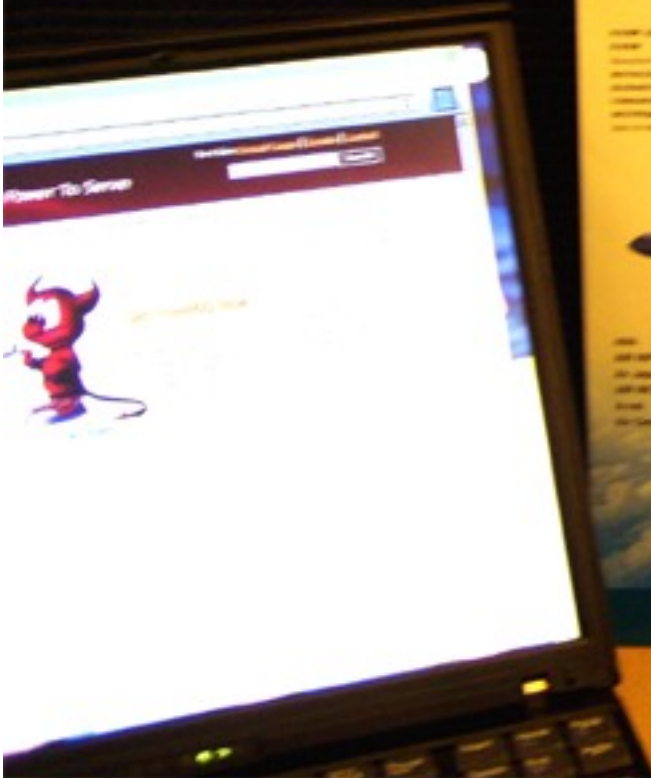
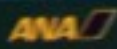
安全のしおり SAFETY INSTRUCTIONS

B777-300

このカードは、
乗客が機内での安全な行動を
とるための重要な情報です。
必ずお読みください。
機内での安全な行動を
とるための重要な情報です。
必ずお読みください。



ANA
ANA SAFETY
ANA SAFETY
ANA SAFETY
ANA SAFETY



どんな感じ？

- 普通の無線LAN
つながって当たり前
- 速度計測をする余裕なし(すまぬ)
普通。100~150kbps程度ぐらいは出ている感じ

使い方

- SSID: Connexion1
- WepKeyなど: なし
- Connexion by Boeingというサービス
- 最初にWebページがリダイレクトされて
支払方法や使用コース、お前誰？など尋ねられる
それらに答えるとログインし、
使用開始
- 使用権利がある期間は、ログインすれば使える
- ホテルや空港によくあるパターン

使用開始

The screenshot shows a Mozilla browser window titled "Connexion by Boeing - Mozilla". The address bar contains the URL "http://obb.by.boeing/index.php?page=obb". The website header includes the "connexion by Boeing" logo and language options: "English · Deutsch · 日本語 · 简体中文 · 繁體中文 · 한국어". A search bar is present with the text "Search the Web" and "Powered by YAHOO! Search".

The main content area features a large image of two people in an airplane cabin. Text on the page includes "you are now online" and "Simply launch your e-mail client, enter a URL in the address bar of your browser, or start your VPN client to access your corporate network." A sidebar on the left contains a "Sign Out" button, a "Show Status Window" link, and a navigation menu with items like "Home", "Pricing", "FAQs", "Help Options", "My Account", "Product Tour", "Getting Access", "About Us", and "Our Partners".

At the bottom of the page, there are three informational boxes: "Important" (regarding signing out), "Need Help? Free Live Chat Help" (with a "Live Chat Help" button), and "VPN Tips" (with a "VPN Tips" button). A vertical banner on the right side says "First in the Sky with In-Flight High-Speed Internet Service".

At the bottom of the browser window, a terminal window is open with the following text:

```
Keep this window open.
Return to this window to
Sign Out of the Service.

sa Point. and now it supports WPA with t
:: The host side: # ifconfig ath0 inet
3859-1/articles/wireless/article.html -

gedanken%
gedanken%
gedanken%
gedanken%
gedanken%
gedanken%
gedanken% xwd -root >/tmp/connex2
```

こんなことします

```
route delete default
```

大事なものは↓

```
ifconfig ath0 ssid Connexion1
```

```
dhclient ath0
```


ちなみに、僕は、こんなことしてます

```
rm /etc/hosts
```

```
ln -s /etc/hosts.soto /etc/hosts
```

```
rm /etc/resolv.conf
```

```
ln -s /etc/resolv.conf.soto /etc/resolv.conf
```

```
route delete default
```

私はdhcpのないLANと両方を使用してるので↑みたいな事をやっています

※大切なresolv.confは dhcpclientに消されないように注意した方がいいですよ

大事なのは↓

```
ifconfig ath0 ssid Connexion1
```

```
dhclient ath0
```

The FreeBSD Project - Mozilla

File Edit View Go Bookmarks Tools Window Help

http://www.freebsd.org/



FreeBSD® The Power To Serve

Text Size: Normal / Large | Donate | Contact

Search Search

Home | About | Get FreeBSD | Documentation | Community | Developers | Support

Based on BSD UNIX®

FreeBSD® is an advanced operating system for x86 compatible (including Pentium® and Athlon™), amd64 compatible (including Opteron™, Athlon 64, and EM64T), UltraSPARC®, IA-64, PC-98 and ARM architectures. It is derived from BSD, the version of UNIX® developed at the University of California, Berkeley. It is maintained by a [large team](#) of international [platforms](#) are in development.



Get FreeBSD Now

LATEST RELEASES

- » [Production Release 6.1](#)
- » [Production \(Legacy\) Release 5.4](#)
- » [Upcoming Release 5.5-RC1](#)

SHORTCUTS

- » [Mailing Lists](#)
- » [Report a Bug](#)
- » [FAQ](#)
- » [Handbook](#)
- » [Foundation](#)
- » [Ports](#)

de | en | es | fr | it | ja | ru

Austria/2

Go

Connexion by Boeing - Mozilla

File Edit View Go Bookmarks Tools

connexion
by Boeing™

You are Signed In

Continue →

» [Connexion by Boeing Home](#)

Using VPN?
Disconnect prior to sign out.

Sign Out →

Keep this window open.
Return to this window to
Sign Out of the Service.

UPCOMING EVENTS

2006-02-22 - 2006-06-13
[FreeBSD Kernel Code Reading Course](#)
(Berkeley, U.S.A.)

2006-05-30 - 2006-06-03
[2006 USENIX Annual Technical Conference](#)
(Boston, USA)

2006-06-24 - 2006-06-25
[FrOSCon 2006](#)
(Sankt Augustin, Germany)

2006-09-16 - 2006-09-17
[Linuxage in Essen](#)
(Essen, Germany)

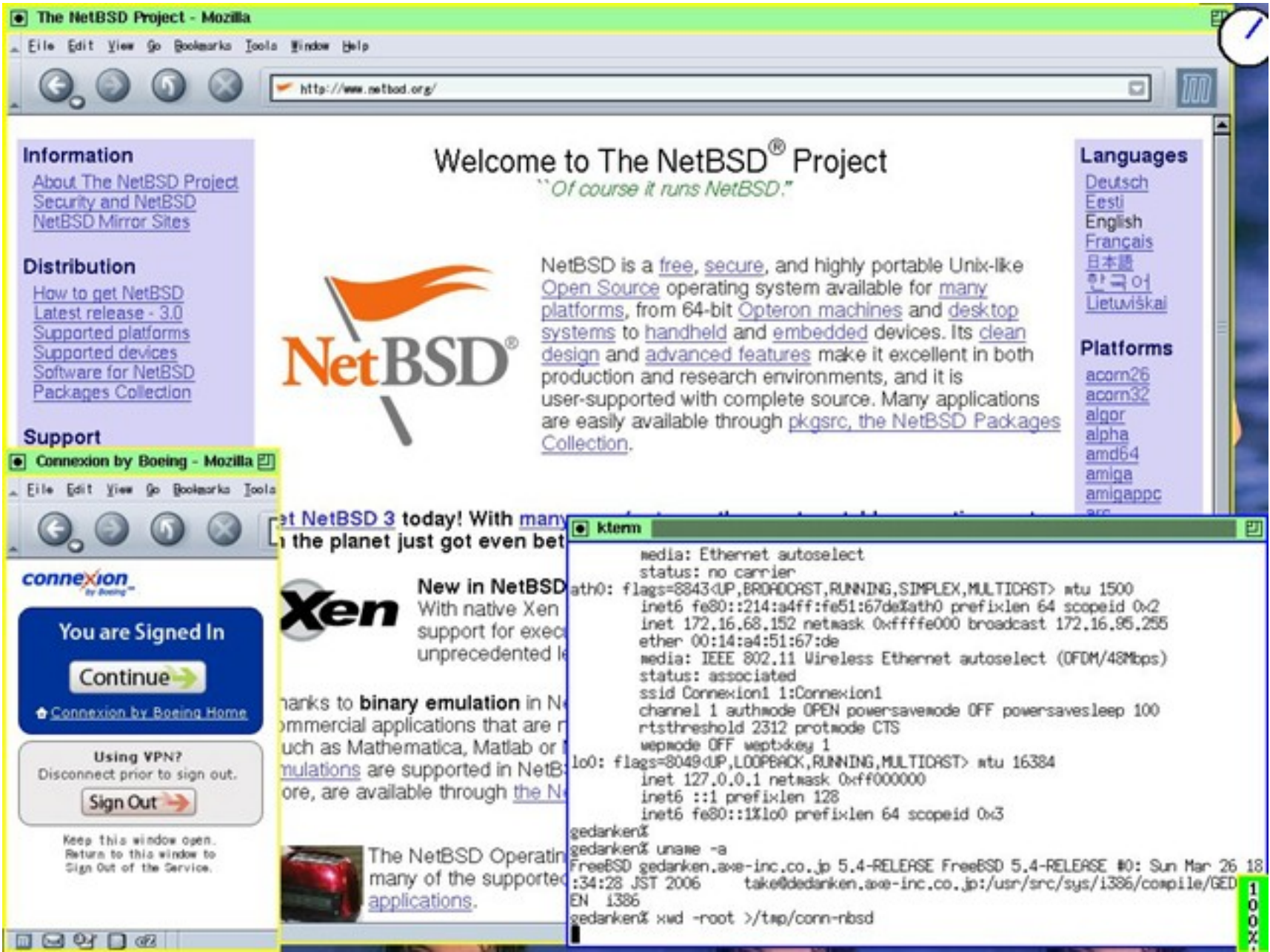
[More Events](#)

kterm

```

EN 1386
gedanken% pwd -root >/tmp/conn-nbsd
gedanken% pwd -root >/tmp/conn-
gedanken% ifconfig ath0
ath0: flags=8843<UP,BROADCAST,RUNNING,SIMPLEX,MULTICAST> mtu 1500
inet6 fe80::214:a4ff:fe51:67de%ath0 prefixlen 64 scopeid 0x2
inet 172.16.68.152 netmask 0xffffe000 broadcast 172.16.95.255
ether 00:14:a4:51:67:de
media: IEEE 802.11 Wireless Ethernet autoselect (OFDM/48Mbps)
status: associated
ssid Connexion1 1:Connexion1
channel 1 authmode OPEN powersave mode OFF powersavesleep 100
rtssthreshold 2312 protmode CTS
wep mode OFF wept>key 1
gedanken% cat /etc/resolv.conf
search by.boeing
nameserver 172.16.0.18
gedanken% uname -a
FreeBSD gedanken.aoe-inc.co.jp 5.4-RELEASE FreeBSD 5.4-RELEASE #0: Sun Mar 26 18:34:28 JST 2006 take@dedanken.aoe-inc.co.jp:/usr/src/sys/i386/compile/GED
EN 1386
gedanken% pwd -root >/tmp/connex

```



The NetBSD Project - Mozilla

File Edit View Go Bookmarks Tools Window Help

http://www.netbsd.org/

Information

- [About The NetBSD Project](#)
- [Security and NetBSD](#)
- [NetBSD Mirror Sites](#)

Distribution

- [How to get NetBSD](#)
- [Latest release - 3.0](#)
- [Supported platforms](#)
- [Supported devices](#)
- [Software for NetBSD](#)
- [Packages Collection](#)

Support

Connexion by Boeing - Mozilla

File Edit View Go Bookmarks Tools



You are Signed In

Continue

Connexion by Boeing Home

Using VPN?

Disconnect prior to sign out.

Sign Out

Keep this window open.
Return to this window to
Sign Out of the Service.

Welcome to The NetBSD® Project

"Of course it runs NetBSD."



NetBSD is a free, secure, and highly portable Unix-like Open Source operating system available for many platforms, from 64-bit Opteron machines and desktop systems to handheld and embedded devices. Its clean design and advanced features make it excellent in both production and research environments, and it is user-supported with complete source. Many applications are easily available through pkgsrc, the NetBSD Packages Collection.

Languages

- [Deutsch](#)
- [Eesti](#)
- [English](#)
- [Français](#)
- [日本語](#)
- [한국어](#)
- [Lietuviškai](#)

Platforms

- [acorn26](#)
- [acorn32](#)
- [algor](#)
- [alpha](#)
- [amd64](#)
- [amiga](#)
- [amigappc](#)
- [arc](#)

Get NetBSD 3 today! With many...
the planet just got even bet...



New in NetBSD

With native Xen support for execution, unprecedented...

Thanks to binary emulation in NetBSD, many commercial applications that are not supported in NetBSD, such as Mathematica, Matlab or others, are available through the NetBSD Packages Collection.



The NetBSD Operating System...
many of the supported...
[applications](#).

kterm

```
media: Ethernet autoselect
status: no carrier
ath0: flags=8843<UP,BROADCAST,RUNNING,SIMPLEX,MULTICAST> mtu 1500
inet6 fe80::214:a4ff:fe51:67de%ath0 prefixlen 64 scopeid 0x2
inet 172.16.68.152 netmask 0xffffe000 broadcast 172.16.95.255
ether 00:14:a4:51:67:de
media: IEEE 802.11 Wireless Ethernet autoselect (OFDM/48Mbps)
status: associated
ssid Connexion1 1:Connexion1
channel 1 authmode OPEN powersave mode OFF powersavesleep 100
rtsthreshold 2312 protmode CTS
wepmode OFF weptkey 1
lo0: flags=8049<UP,LOOPBACK,RUNNING,MULTICAST> mtu 16384
inet 127.0.0.1 netmask 0xff000000
inet6 ::1 prefixlen 128
inet6 fe80::1%lo0 prefixlen 64 scopeid 0x3
gedanken%
gedanken% uname -a
FreeBSD gedanken.aoe-inc.co.jp 5.4-RELEASE FreeBSD 5.4-RELEASE #0: Sun Mar 26 18:34:28 JST 2006 take@dedanken.aoe-inc.co.jp:/usr/src/sys/i386/compile/GEDEN 1386
gedanken% wd -root >/tmp/conn-nbsd
```

100%

Kansai *BSD Users Group - Mozilla

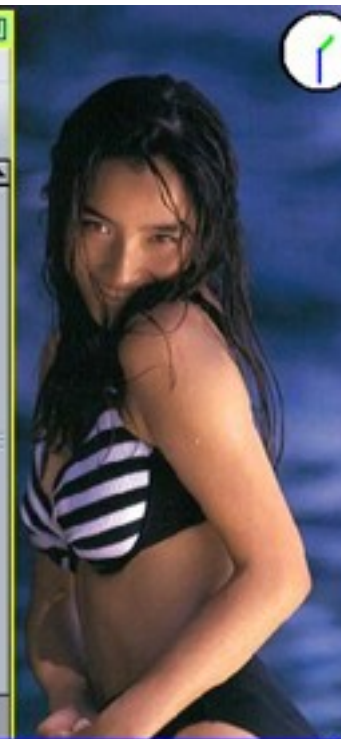
gedank

File Edit View Go Bookmarks Tools Window Help

http://www.kbug.gr.jp/

K*bug

関西 *BSD ユーザ会
(Kansai *BSD Users Group)



News

Connexion by Boeing - Mozilla

File Edit View Go Bookmarks Tools

connexion by Boeing

You are Signed In

Continue

Connexion by Boeing Home

Using VPN?
Disconnect prior to sign out.

Sign Out

Keep this window open.
Return to this window to
Sign Out of the Service.

土)に第2回勉強会を、株式会社アックス京都本社会議室で行います。

土)に第1回勉強会を、大阪学院大学2

役員と、2006年の運営委員一覧を公開

土)に第7回総会 & 新年会を行いました

にて忘年会を行いました

予定されていた総会・研究会は1月に

```

kterm
gedanken% uname -a
FreeBSD gedanken.ave-inc.co.jp 5.4-RELEASE FreeBSD 5.4-RELEASE #0: Sun Mar 26 18
:34:28 JST 2006 take@dedanken.ave-inc.co.jp:/usr/src/sys/i386/compile/GEDANK
EN i386
gedanken% ifconfig ath0
ath0: flags=8843<UP,BROADCAST,RUNNING,SIMPLEX,MULTICAST> mtu 1500
inet6 fe80::214:a4ff:fe51:67de%ath0 prefixlen 64 scopeid 0x2
ether 00:14:a4:51:67:de
media: IEEE 802.11 Wireless Ethernet autoselect (OFDM/54Mbps)
status: associated
ssid Connexion1 1:Connexion1
channel 1 authmode OPEN powersave mode OFF powersavesleep 100
rtsthreshold 2312 protmode CTS
wepmode OFF weptkey 1
gedanken% cat /etc/resolv.conf
search by.boeing
nameserver 172.16.0.18
gedanken% xwd -root >/tmp/kbug

```

OS+Mozilla

- FreeBSD gedanken.axe-inc.co.jp 5.4-RELEASE
FreeBSD 5.4-RELEASE #0: Sun Mar 26 18:34:28
JST 2006 take@dedanken.axe-
inc.co.jp:/usr/src/sys/i386/compile/GEDANKEN
i386
-
- Mozilla 1.7.7, Copyright (c) 2003-2004 mozilla.org
<developer build>

IPアドレスは?

```
gedanken% ifconfig ath0
ath0: flags=8843<UP,BROADCAST,RUNNING,SIMPLEX,MULTICAST> mtu 1500
inet6 fe80::214:a4ff:fe51:67de%ath0 prefixlen 64 scopeid 0x2
inet 172.16.68.152 netmask 0xffffe000 broadcast 172.16.95.255
ether 00:14:a4:51:67:de
media: IEEE 802.11 Wireless Ethernet autoselect (OFDM/54Mbps)
status: associated
ssid Connexion1 1:Connexion1
channel 1 authmode OPEN powersavemode OFF powersavesleep 100
rtsthreshold 2312 protmode CTS
wepmode OFF weptxkey 1
```

ルータは？

```
gedanken% netstat -rn
```

```
Routing tables
```

```
Internet:
```

Destination Expire	Gateway	Flags	Refs	Use	Netif
default	172.16.64.1	UGS	0	593	ath0
127.0.0.1	127.0.0.1	UH	1	41	lo0
172.16.64/19	link#2	UC	0	0	ath0
172.16.64.1 1143	00:c0:95:3a:e4:1f	UHLW	1	2	ath0
172.16.68.152	127.0.0.1	UGHS	0	0	lo0
192.47.224	link#1	UC	0	0	em0

Name serverは?

```
gedanken% cat /etc/resolv.conf  
search by.boeing  
nameserver 172.16.0.18
```


値段は？

- 1時間 \$9.95
- 2時間 \$14.95
- 3時間 \$17.95
- 1フライト定額料金\$26.95

サインイン後24時間以内の乗り継ぎ便も含む

支払いは、何通りかあったが、クレジットカードが普通でしょう。

地上について2日ぐらいすると明細のメールが来る

その他

- 飛んだ後 PC が使えるようになっても、なかなか無線LANは使えるようにならず。
- 有線Etherのコネクタが座席に来ている場合もあり
プレミアム・エコノミーとか
Etherケーブル飛行機の中までは持ちこむべき？
- 電源は来ており、日本のプラグで大丈夫
今回はANAだったからなあ…
- 新しい機材じゃないと付いてない、と、思われ
ジャンボ(B747)は駄目な率が高そう

URL

- <http://www.connexionbyboeing.com/>